

Telephone **01249 760581** or email **sales@urathon.com**

2024

Product Catalogue



Urathon[®]

**SPECIALIST SUPPLIERS TO THE MOBILITY
& REHABILITATION INDUSTRY**

Updated: 20 March 2024

Urathon®

Urathon have been designing and brand manufacturing for many of the healthcare industries leading suppliers worldwide for almost 25 years including a number of the UKs largest providers to hospitals, community equipment stores and mobility dealers.

Our range of products are available to own brand by full mixed containers supplied directly from our wholly owned manufacturing base in China.



Contents

Bedroom Aids **3**

Bathing, Showering, Toileting Aids **6**

Mobility Aids **14**

Moving & Handling **19**

Around The Home **23**

Bedroom Aids

Welcome to our 'Bedroom Aids' section, where you'll find a curated selection of essential products designed to enhance safety, comfort, and convenience in your bedroom. Explore our range of bed rails, bed supports, and commodes, thoughtfully chosen to provide the support you need to create a secure and comfortable bedroom environment. Whether you're looking for assistance with mobility or seeking solutions to improve your overall quality of life, our bedroom aids are here to help you rest easy.



Bedstick Slatted Bed

- Length: 822mm
- Width: 622mm
- Height: 500mm
- Max weight: 190kg
- BS EN ISO 10993-10

90321



Premier Bed Rail

- Easy assembly
- Stores flat
- Adjustable height
- Suitable for all beds
- Length: 833mm
- Width: 418mm
- Height: 808mm
- Max weight: 160kg
- BS EN ISO 10993-10

90292



Double Bedstick

- Adjustable Width
- Powder Coated White
- Length: 335mm
- Width: 960 - 1555mm
- Height: 440mm
- Max weight: 140kg
- BS EN ISO 10993-10

90354



Double Bedstick

- Adjustable Width
- Chrome Plated
- Length: 335mm
- Width: 960 - 1555mm
- Height: 440mm
- Max weight: 140kg

90355



Bedstick For Divan Bed

- Length: 805mm
- Width: 622mm
- Height: 646mm
- Max weight: 190kg
- BS EN ISO 10993-10

90322



Straps (PAIR) for UEL90321/90322

- Length: 2500mm
- Width: 25mm
- Max weight: 50kg

90324



Bed Grab Rail

- Length: 653mm
- Width: 435mm
- Height: 510mm
- Max weight: 165kg
- BS EN ISO 10993-10

90521



Bed Lever with Straps

- Length: 610mm
- Width: 362mm
- Height: 561mm
- Max weight: 160kg
- BS EN ISO 10993-10

90325



Stacking Commode Chair

- Height Adjustable
- Fixed Arms
- HF Vinyl Welded Padded Seat & Back
- Brown powder coated steel frame
- Anti Rattle Ring & DIP Moulded Ferrule
- Commode Pan & Lid
- Length: 525-545mm
- Width: 551mm
- Height: 785-930mm
- Seat Height: 452-602mm
- Max weight: 160kg
- BS EN ISO 10993-10

90096



Stacking Commode Chair with Removable Arms

- Height Adjustable
- Removable Arms
- HF Welded Padded Seat & Back
- Brown padding and brown powder coated steel
- Anti Rattle Ring & DIP Moulded Ferrule
- Commode Pan & Lid
- Length: 525-545mm
- Width: 551mm
- Height: 785-930mm
- Seat Height: 452-602mm
- Max weight: 160kg
- BS EN ISO 10993-10

90323



Bed Bumpers with Mesh Divide

- Blue with black mesh
- Length: 2000mm
- Width: 710mm
- Height: 10mm

90522



Bed Bumpers with Mesh Divide

- Cream with white mesh
- Length: 2000mm
- Width: 710mm
- Height: 10mm

90560



Postural Wedge

- Non slip material
- Length: 530mm
- Width: 275mm
- Height: 210mm

90397

Freedom 2 Bed

- 4 section profiling bed
- Electrically operated backrest, height and knee break angle
- See Freedom 2 manual for details
- Length: 2230mm
- Width: 980mm
- Height: 335 - 735mm
- Max weight: 178kg
- BS EN ISO 10993-10



90533



Freedom 2 Bed Lever

- Compatible with the Freedom 2 Bed
- Length: 126mm
- Width: 286mm
- Height: 713mm
- Max weight: 160kg

90558

Bathing, Showering, Toileting Aids

Introducing our 'Bathing, Showering, and Toileting Aids' section, a collection of essential products designed to make your daily hygiene routines safer and more comfortable.

Dive into our selection of bath seats, bath stools, shower chairs, and toilet frames, carefully chosen to provide you with the support and assistance you need to maintain your independence in the bathroom. Our goal is to help you enjoy a sense of security and convenience while promoting your well-being, so you can confidently and comfortably carry out your daily self-care rituals.



Bath Seat

- Strong suction feet
- Available in 150mm, 250mm and 350mm height options
- Length: 290mm
- Width: 450mm
- Max weight: 190kg



26"

26" Bath Board 4 Slat

- Adjustable securing brackets
- Length: 240mm
- Width: 600mm
- Height: 20mm

90210



27"

27" Bath Board 4 Slat

- Adjustable securing brackets
- Length: 240mm
- Width: 690mm
- Height: 20mm

90211



28"

28" Bath Board 4 Slat

- Adjustable securing brackets
- Length: 240mm
- Width: 710mm
- Height: 20mm

90212



26"

26" Bath Board 6 Slat

- Adjustable securing brackets
- Length: 360mm
- Width: 660mm
- Height: 20mm
- Max weight: 190kg

90254



27"

27" Bath Board 6 Slat

- Adjustable securing brackets
- Length: 360mm
- Width: 690mm
- Height: 20mm
- Max weight: 190kg

90255



28"

28" Bath Board 6 Slat

- Adjustable securing brackets
- Length: 360mm
- Width: 710mm
- Height: 20mm
- Max weight: 190kg

90256



Max Weight 160kg

Aston AP Aluminium Shower Chair

- Removable PU Back and PU Horseshoe Seat with Aperture Plug
- 4 x Braked Nylon Castors
- Fold Up PU Arms Pads
- Removable Swing Away Leg Rests and Nylon Angle Adjustable Footplates
- Potty
- Seat width: 460mm
- Seat height: 510-535mm
- Height: 985-1010mm
- Length: 860mm
- Width: 569mm
- BS EN ISO 10993-10

90209



Max Weight 160kg

Aston SP Aluminium Shower Chair

- Removable PU Back and Horseshoe Seat with Aperture Plug
- 2 x Braked Nylon Castors and 2 x 24" MAG Wheels with PU Tyres and Q.R Pins
- Fold Up PU Arms Pads
- Removable Swing Away Leg Rests and Nylon Angle Adjustable Footplates
- Potty
- Seat width: 460mm
- Seat height: 510-535mm
- Height: 985-1010mm
- Length: 860mm
- Width: 569mm
- BS EN ISO 10993-10

90349



Max Weight 260kg

Aston AP HD Aluminium Shower Chair

- Removable PU Back PU Horseshoe Seat with Aperture Plug
- 4 x Braked Nylon Castors
- Fold Up PU Arms Pads
- Removable Swing Away Leg Rests and Nylon Angle Adjustable Footplates
- Potty
- Seat width: 560mm
- Seat height: 510-535mm
- Height: 985-1010mm
- Length: 860mm
- Width: 569mm
- BS EN ISO 10993-10

90350



Max Weight 300kg

Aston AP XXL Aluminium Shower Chair

- Removable PU Back, PU Horseshoe Seat with Aperture Plug
- 4 x Braked Nylon Castors
- Fold Up PU Arms Pads
- Removable Swing Away Leg Rests and Nylon Angle Adjustable Footplates
- Potty
- Seat width: 600mm
- Seat height: 510-535mm
- Length: 860mm
- Width: 569mm
- Height: 985-1010mm
- Max weight: 300kg
- BS EN ISO 10993-10

90513

Aston Self Propel Wheel Kit available



Aston AP Aluminium Shower Chair, Tilt in Space

- Lightweight aluminium frame - Easy to manoeuvre and offers long-term rust-free durability.
- Tilt and space chair – ideal for showering people comfortably
- 4 x Large, braked, robust castors for durability and manoeuvrability.
- Polyurethane seat, seat-infill, back and armrests are water-resistant, easy to clean and comfortable.
- Full height adjustable to suit all heights of the users
- Simple swing away and height adjustable footrests
- Easy to clean seat and removable back
- Flip up arm rests – For easy side transfer
- Large capacity commode pan and lid
- BS EN ISO 10993-10

90581



Toilet Frame, Height Adjustable

- Complete with Injection Moulded Seat
- Length: 443-471mm
- Width: 607-612mm
- Height: 622-771mm
- Seat height: 428-578mm
- Max weight: 190kg
- BS EN ISO 10993-10

90341



Toilet Frame, Width & Height Adjustable

- Complete with Injection Moulded Seat
- Length: 443-471mm
- Width: 570-720mm
- Height: 622-771mm
- Seat height: 428-578mm
- Max weight: 190kg
- BS EN ISO 10993-10

90532



Aluminium Swivel Bather

- Adjustable Width
- Width: 770 - 820mm
- Height: 530mm
- Width between arms: 600-700mm
- Max weight: 150kg
- BS EN ISO 10993-10

90071



Toilet Frame, Clip on Seat & Chute

- Height Adjustable
- Length: 465 - 495mm
- Width: 558mm
- Height: 690 - 835mm
- Seat height: 483-628mm
- Max weight: 190kg
- BS EN ISO 10993-10

90120



Chrome Plated Glideabout

- 4 x Castors
- Removable, Grey Aperture Seat with Padded Vanity Cover
- Removable Arm Rests, Backrest, Leg Rests
- Potty
- Grey Vinyl Aphilstery
- Length: 840mm
- Width: 525mm
- Height: 985mm
- Seat height: 525mm
- Max weight: 165kg

90099



Height Adjustable Chrome Plated Glideabout

- Height Adjustable
- Height: 985 - 1085mm
- Seat height: 525 - 625mm
- Max weight: 165kg

90294



Mild Steel Glideabout

- 4 x Castors
- Removable, Grey Aperture Seat with Padded Vanity Cover
- Removable Arm Rests, Backrest, Leg Rests
- Potty
- Grey Vinyl Aphilstery
- Length: 922mm
- Width: 530mm
- Height: 962mm
- Seat height: 528mm
- Max weight: 165kg
- BS EN ISO 10993-10

90517



Height Adjustable Mild Steel Glideabout

- Height Adjustable
- Height: 985-1085mm
- Max weight: 165kg
- BS EN ISO 10993-10

90595



KD Glideabout

- Easy to Dissassemble
- Removable Aperture
- Padded Vunyl Seat
- Removable Back, Arms and Swing Angle Leg Rests
- Length: 902mm
- Width: 520mm
- Height: 908mm
- Seat height: 530mm
- Max weight: 190kg
- BS EN ISO 10993-10

90519



Drop Down Rail with Support Leg

- Length: 692mm
- Width: 100mm
- Height: 750mm
- Max weight: 190kg
- BS EN ISO 10993-10

90146

Hospital Portering Chair

- Full PU Seat and back – Durable, robust, easy to clean and reduces any cross-infection risk. Ideal in heavy usage situations
- Strong balanced footplate – Durable with the ability to take the full user weight without tipping
- The footplate is made from HDPE plastic – Robust and ideal for infection control. Competitors tend to use wood which is a cross infection risk
- Stainless steel frame – Ensure product longevity. Allows the product to be used outside without fear of rust. Easy to wipe surface reduces risk of cross infection. Competitors are made from mild steel that can rust when exposed to the inclement weather
- 300kg SWL – Most competitors are only 190 KGs, so this can be used with the heaviest of patients
- Moulded drop-down arms – Allows for quick and safe side transfers
- Accessory mounts – Allows IV poles etc to be used with the chair
- Xray/notes pocket as standard – Enables the users records to be transported safely with the user from department to department.
- BS EN ISO 10993-10
- Size – 600 x 865 x 1040
- Seat Width – 540mm
- Seat Depth – 410mm
- Seat Height – 540mm
- Backrest Height – 480mm



90337



Aquarius KD Shower Commode Chair

- Can be easily used as a; shower chair, freestanding toilet raiser and commode
- Removable padded backrest
- Removable arms
- Easily removable height adjustable legs
- Non slip rubber feet
- Removable potty
- Aperture seat with padded vanity cover
- Length: 395mm
- Width: 505mm
- Weight: 750 – 877mm
- Seat Height: 420 – 545mm
- Seat width: 460mm
- Weight: 5.1kg
- Max user weight: 130kg

90667



Greenwal KD Ali Shower Chair

- Removable, padded armrests for comfort and added security
- Blow-molded seat and back provide comfort and strength and is warm to the touch
- Drainage holes in bench reduce slipping
- Aluminum frame
- Leg height adjusts in 25mm increments
- Product Specifications
- Product Weight: 4.4kg
- Max user weight: 136kg
- Seat width: 400mm
- Seat width : 330mm
- Seat to Floor Height: 400mm – 530mm
- Width Between Arms: 490mm

90666



Shower Stool

- Height Adjustable
- Powder Coated Steel Frame
- Easy to remove PP Seat
- Aluminium option
- Length: 370-395mm
- Width: 529-540mm
- Height: 560-710mm
- Seat height: 480-630mm
- Max weight: 127kg
- BS EN ISO 10993-10

90115



KD Teak bath stool

- Height Adjustable
- Length: 555-610mm
- Width: 555-610mm
- Height: 380-510mm
- Max weight: 300kg

90392



HD Suction Grab Rail 44/56cm

- Bar adjustable over 12cm
- Strong rubber suction cups
- Secure suction cups by lowering the lever
- Max weight: 40 kg

90631



HD Suction Grab Rail 55/68cm

- Bar adjustable over 12cm
- Strong rubber suction cups
- Secure suction cups by lowering the lever
- Max weight: 40 kg

90632



HD Suction Grab Rail 65/78cm

- Bar adjustable over 12cm
- Strong rubber suction cups
- Secure suction cups by lowering the lever
- Max weight: 40 kg

90633



2"

Raised Toilet Seat, No Lid

- Ergonomic design, Strong, durable and easy to clean
- Easy adjustable fixings for secure fit on most toilets
- Quick to fit or remove
- Max weight: 190kg

90635



4"

Raised Toilet Seat, No Lid

- Ergonomic design, Strong, durable and easy to clean
- Easy adjustable fixings for secure fit on most toilets
- Quick to fit or remove
- Max weight: 190kg

90636



6"

Raised Toilet Seat, No Lid

- Ergonomic design, Strong, durable and easy to clean
- Easy adjustable fixings for secure fit on most toilets
- Quick to fit or remove
- Max weight: 190kg

90637



2"

Raised Toilet Seat, With Lid

- Ergonomic design, Strong, durable and easy to clean
- Easy adjustable fixings for secure fit on most toilets
- Quick to fit or remove
- Max weight: 190kg

90660



4"

Raised Toilet Seat, With Lid

- Ergonomic design, Strong, durable and easy to clean
- Easy adjustable fixings for secure fit on most toilets
- Quick to fit or remove
- Max weight: 190kg

90661



6"

Raised Toilet Seat, With Lid

- Ergonomic design, Strong, durable and easy to clean
- Easy adjustable fixings for secure fit on most toilets
- Quick to fit or remove
- Max weight: 190kg

90662



**Toilet Surround
Height and Width
Adjustable**

- Height & Width Adjustable
- Floor fixing option available
- Length: 450 - 455mm
- Width: 584 - 734mm
- Height: 645 - 795mm
- Max weight: 190kg
- BS EN ISO 10993-10

90438



Toilet Surround

- Height Adjustable
- Floor fixing option available
- Length: 450 - 455mm
- Width: 524mm
- Height: 645 - 795mm
- Max weight: 180kg
- BS EN ISO 10993-10

90028



Static Shower Chair

- Height Adjustable
- Length: 480-505mm
- Width: 620 - 645mm
- Height: 775-925mm
- Seat height: 440-590mm
- Max weight: 160kg
- BS EN ISO 10993-10

90092



4 Part Bath Step

- Length: 375mm
- Width: 480mm
- Height: 110mm
- Max weight: 250kg

90116



**Male Urinal Bottle
with lid**

- Length: 126mm
- Width: 98mm
- Height: 225mm

90597



Swivel Bath Stool

- PU Seat with Lockable Swivel Function
- Storage Tray
- Height Adjustable
- Length: 380mm
- Width: 380mm
- Height: 410 - 580mm
- Max weight: 135kg

90398

Mobility Aids

Welcome to our 'Mobility Aids' section, where we proudly offer a range of products dedicated to enhancing your freedom of movement and independence.

Explore our selection of rollators, designed to provide you with stability and support as you navigate through your daily life. We understand the importance of maintaining an active lifestyle, and our mobility aids are here to help you do just that. With our rollators, you can move with confidence and ease, whether you're indoors or outdoors, and enjoy the freedom you deserve.



4 Wheeled Aluminium Rollator

- Foldable
- 200mm PU Castor
- Seat, Back Rest and Bag
- Length: 670mm
- Width: 630mm
- Width between arms: 445mm
- Height: 800 - 980mm
- Seat height: 550mm
- Max weight: 145kg
- BS EN ISO 10993-10

90387



3 Wheeled Mild Steel Rollator

- Foldable
- 200mm PU Castor
- Bag
- Length: 670mm
- Width: 715mm
- Width between arms: 510mm
- Height: 780-930mm
- Max weight: 125kg
- BS EN ISO 10993-10

90518



3 Wheeled Aluminium Rollator

- Lightweight Grey powder coated Aluminium frame
- Easy to fold
- Height adjustable push handles
- Push to lock brakes
- 200mm PU castor wheels
- Bag included
- Height: 800 – 980mm
- Length: 670mm
- Total Width at rear: 685mm
- Max weight: 125kg
- BS EN ISO 10993-10

90386



Lightweight 4 Wheel Rollator

- Foldable
- Aluminium frame weighing only 6.9kg
- PP+PVC 8" Wheels
- Metallic
- Length: 750mm
- Width: 650mm
- Height: 875-975 mm
- Seat height: 545mm
- Max weight: 136kg

90527

Max Weight 200kg



HD Lightweight 4 Wheel Rollator

- Foldable
- Aluminium frame weighing only 9.6kg
- PP+PVC 8" front and 10" rear Wheels
- Metallic
- Length: 700mm
- Width: 780mm
- Height: 910-1010mm
- Seat height: 580mm
- Max weight: 200kg

90526



Leo Rollator

- One touch adjustable height push handles with Ergonomic comfort grips
- Breathable fabric seat
- Height and depth adjustable padded backrest
- Push to lock brakes with safe internal routed brake cables
- Large 10" Front and 8" Rear wheels with PU Flat Free Tyres
- High quality easily removable zip-shut storage bag
- Easy folding with simple click to lock mechanism
- Simple to attach cane holder
- Weight: Small 7.5kg, Medium 7.8kg
- Length: 720mm
- Width: Folded 280mm, Unfolded 610mm
- Max Weight: 130kg

Small	90653
Medium	90652



Aries Rollator

- One touch adjustable height push handles with Ergonomic comfort grips
- Upgraded soft padded seat
- Height and depth adjustable padded backrest
- Push to lock brakes with safe internal routed brake cables
- Large upgraded 10" Front and 8" Rear wheels with PU Flat Free Tyres
- High quality easily removable zip-shut storage bag
- Easy folding with simple click to lock mechanism
- Simple to attach cane holder
- Weight: Small 7.5kg, Medium 7.8kg
- Length: 720mm
- Width: Folded 280mm, Unfolded 610mm
- Seat Height: Small 540mm, Medium 620mm
- Max Weight: 130kg

Small	90655
Medium	90654



Taurus Rollator

- One touch adjustable height push handles with Ergonomic comfort grips
- Luxury Genuine stitched leather finishing on padded seat
- Height and depth adjustable padded backrest
- Push to lock brakes with safe internal routed brake cables
- Large upgraded 10" Front and 8" Rear wheels with chunky treaded PU Flat Free Tyres
- Genuine stitched leather removable zip-shut storage bag
- Easy folding with simple click to lock mechanism
- Simple to attach cane holder
- Weight: Small 7.5kg, Medium 7.8kg
- Length: 720mm
- Width: Folded 280mm, Unfolded 610mm
- Seat Height: Small 540mm, Medium 620mm
- Max Weight: 130kg

Small	90657
Medium	90656

Hybrid 2 in 1 Rollator Range

The uniquely designed frame of our Leo, Aries and Taurus Hybrid Rollator/ Wheelchairs are made of high-quality lightweight Aluminium. This highly versatile mobility aid offers the user the functionality of having one unit which can be used both as a standard rollator and also easily transformed into a transit wheelchair with no tools required.

This Hybrid range has all of the features of the rollator with the additional added leg rests with flip up footplates and ergonomic arm rests which both fold easily out of the way when used as a rollator. The padded back support can be simply lifted from one side to the other in order that it works for both rollator seat support and wheelchair backrest.

The push handles are simple to height adjust. The unit comes with a quality bag which does not have to be removed when used as a wheelchair.

90683

Leo Hybrid 2 in 1 Rollator



90685

Aries Hybrid 2 in 1 Rollator



90687

Taurus Hybrid 2 in 1 Rollator



Aluminium Transit Wheelchair with Flip up Arms

Suitable for both indoor and outdoor use, this attendant-propelled wheelchair is an excellent choice for the occasional user.

Weighing just 15kg it affords a good degree of comfort thanks to padded upholstery. This unit has simple, detachable, length adjustable footrests with fold up footplates and flip up easily removable arm rests for simple side transfers.

The unit features attendant operated brakes and additional push to lock parking brakes which are easy to reach for both attendant and user. Rear wheels and front castors both have Flat Free tyres.

The half folding backrest and easy folding frame make this the perfect compact choice for those that need a chair to take in the back of their car or for travel purposes.

This chair has been crash tested and can be used for secured transport within a motor vehicle.

Specification

- Seat belt included
- Half folding backrest
- Suitable for indoor and outdoor use
- Flat Free Tyres
- Compact when folded (750 x 800 x 260mm)
- Front wheels diameter: 200mm
- Rear wheels diameter: 300mm
- Seat width: 450mm
- Seat depth: 400mm
- Seat height (front): 500mm
- Width between arms: 460mm
- Backrest height above seat: 450mm
- Min footrest length: 420mm
- Max footrest length: 490mm
- Length inc footrests: 1020 - 1030mm
- Width when open: 560mm
- Width when folded: 260mm
- Height: 1000mm
- Weight: 15kg
- Max user weight: 120kg
- BS EN ISO 10993-10



90681



Evolution 3 Wheel Steel Walker with Seat

- Unique design with built in seat and backrest
- Lightweight and Easy to fold
- Push to lock brakes
- 200mm PU castor wheels
- Height adjustable push handles
- Simple folding mechanism
- Bag included
- Length: 63.5cm
- Width: 58cm
- Height: 82 – 99cm
- Weight: 6.5kg
- Maximum bag load: 5kg
- Seat height: 53cm
- Max user weight: 115kg
- BS EN ISO 10993-10

90594



Forearm Rollator

The Forearm Rollator has been designed to provide superior upper body support for users with limited hand and forearm strength.

The rollator has comfortable height and depth adjustable padded forearm supports providing increased level of support without relying on the wrists and fingers. Both have cable loop brakes that are easy to reach and utilise even for those with limited hand strength.

The four castors have flat free tyres and the lightweight Aluminium frame is easy to fold. When folded the unit is still compact enough to store in a car boot for transport.

When stationary the brakes can be locked and parked in place to prevent any accidental movements.

The integral, comfortable, breathable fabric seat and padded backrest are ideal when a quick break is required. The rollator also has a convenient holder for a walking stick and a detachable fabric bag.

- Height and depth adjustable PU Forearm supports
- Lightweight
- Easy to fold
- Height adjustable handles
- Detachable carry bag
- Loop handled cable brakes
- Built in seat and backrest
- PU castors
- Length: 795mm
- Width: 645mm
- Height: 1100-1225mm
- Seat height: 535mm
- Max weight: 136kg

90559

Moving & Handling

Discover our 'Moving and Handling' section, a dedicated collection of products designed to assist occupational therapists and caregivers in providing safe and efficient patient care.

Within this section, you'll find a comprehensive range of equipment and aids specially crafted to facilitate the seamless movement of patients from one place to another. Our selection includes items that prioritize patient comfort, safety, and ease of use, enabling professionals to deliver top-quality care.

With these valuable tools at your disposal, you can confidently and effectively manage patient transfers and handling, ensuring their well-being and comfort at every step.

RS1 Patient Turner

- Enables sit-to stand for semi-ambulant users
- Height adjustable handle
- Height adjustable knee pads
- Slip resistant turning disc
- Easy to use and manoeuvre
- Length: 472mm
- Width: 475mm
- Height: 914mm
- Castor Size: 75mm
- Max weight: 150kg
- BS EN ISO 10993-10



90528



RS2 Patient Transfer Assist

- Low step on height base for ease with clients who have minimal leg movement
- Anti slip base ensures the client is safe and secure in transfer
- Low friction castor for ease of manoeuvrability
- One foot touch brake keeps the base stable when embarking and disembarking from the raiser
- Versatile handle design ensures carers of all shapes and sizes can easily manoeuvre it
- Adjustable knee pad gives the client support and comfort when in use
- Length: 635mm, Width: 607mm, Height: 1186mm
- Max weight: 160kg
- BS EN ISO 10993-10

90380



Ladder Belt (Sliding Support Strap)

- For use on RS2 Patient Transfer Assist
- Length: 2000mm
- Width: 100mm
- Height: 20mm

90330



Patient Handling Belt

- For use on RS2 Patient Transfer
- 3 sizes available S,M,L
- Length (mm): S:1050 / M:1300 / L:1500
- Width (mm): S:975 / M:1150 / L:1350
- Height: 100mm

90329

RS3 Patient Mover plus Support Seat

- Perfect for users who can raise themselves to an upright or semi upright position
- Compact size. Turns in its own space
- Articulating knee pad
- High grip 'footprints'
- Excellent manoeuvrability in tight spaces
- Quick and easy seated transfer. One carer needed
- Multi-height adjustment
- Ergonomically design Integral back rest
- Supports up to 22 stone/130kg.
- Length: 472mm, Width: 475mm, Height: 914mm
- Max weight: 150kg
- BS EN ISO 10993-10



90338



RS4 Patient Transfer Assist

- Light Weight, Strong and Robust frame
- Easy flip down support pads
- Easy to open leg mechanism. Works in conjunction with most types of seating and chairs
- Enables users to participate in transfers, maintaining patient independence
- Ideal for those users who can raise from a seated position to a standing position
- Adjustable kneepad
- Compact narrow frame. Manoeuvre in small spaces
- Length: 820mm, Width: 530-730mm, Height: 1060mm
- Seat height: 620-670mm
- Max weight: 185kg
- BS EN ISO 10993-10



90345

Around The Home

Welcome to our 'Around the Home' section, where you'll find a thoughtfully curated collection of products designed to improve the functionality and comfort of your living space. Explore our range of footstools, overbed tables, and perching stools, each carefully selected to enhance your daily life. Whether you're seeking extra support while sitting or assistance with daily tasks, our home-focused aids are here to make your surroundings more accommodating and user-friendly. Elevate your home environment and enjoy increased convenience and ease with our selection of purposeful products



- Height Adjustable
- Width: 1010mm
- Depth: 480mm
- Height: 710-910mm
- Max Weight: 5kg

Overchair Table

This curved overchair/bed table is both width and height adjustable allowing the table to be set up perfectly to the requirements of the user. This table is great for use with chairs, single beds and wheelchairs.

The kidney shaped top is designed to curve gently around the user reducing the need for them to reach forward, it also allows them to rest their arms comfortably on the table top whilst still having a large usable work area.

90615



Overbed Table

- Height Adjustable
- NO Castors
- Cream Powder Coated Steel Frame
- Beech Veneer Top
- Length: 697mm
- Width: 413mm
- Height: 630 - 930mm
- BS EN ISO 10993-10

90290



Overbed Table with Castors

- Height Adjustable
- 4 x 2" Braked Castors
- Cream Powder Coated Steel Frame
- Beech Veneer Table Top
- L: 697mm. W: 413mm
- Height: 630 - 930mm
- BS EN ISO 10993-10

90291



Vinyl Footstool

- Height Adjustable
- 4 x Ferrule
- Length: 500mm
- Width: 315mm
- Height: 380-530mm
- Seat height: 380-535mm
- Max weight: 100kg
- BS EN ISO 10993-10

90454



Vinyl Footstool on Castors

- Height Adjustable
- 4 x 40mm Castors
- Length: 500mm
- Width: 345mm
- Height: 375-525mm
- Seat height: 375-525mm
- Max weight: 100kg
- BS EN ISO 10993-10

90455



Perching Stool

- HF Vinyl Padded Seat
- Adjustable Height
- Length: 415- 460mm
- Width: 561 - 620mm
- Height: 561 - 705mm
- Seat height: 540-686mm
- Max weight: 160kg
- BS EN ISO 10993-10

90167



Perching Stool with Arms

- HF Padded Seat
- Steel Loop Arms, No Back
- Adjustable Height
- Length: 415- 460mm
- Width: 561 - 620mm
- Height: 561 - 705mm
- Seat height: 540-686mm
- Max weight: 160kg
- BS EN ISO 10993-10

90168



Perching Stool with Arms and Back

- HF Vinyl Seat
- Steel Loop Arms & Steel Back
- Adjustable Height
- Length: 415 - 460mm
- Width: 560 - 620mm
- Height: 815 - 960mm
- Seat height: 540 - 685mm
- Max weight: 160kg
- BS EN ISO 10993-10

90169



Perching Stool with Arms and HF Back

- HF Vinyl Seat
- Steel Loop Arms & HF Back
- Adjustable Height
- Length: 415 - 460mm
- Width: 560 - 620mm
- Height: 830 - 975mm
- Seat height: 540 - 685mm
- Max weight: 160kg
- BS EN ISO 10993-10

90117



Bariatric Perching Stool with Arms & HF Back

- HF Seat and HF Back
- Adjustable Height
- Length: 500 - 550mm
- Width: 690 - 750mm
- Height: 950 - 1095mm
- Seat height: 570-715mm
- Max weight: 290kg
- BS EN ISO 10993-10

90327



Perching Stool with PU Seat

- Adjustable Height
- Length: 415 - 460mm
- Width: 560 - 620mm
- Height: 545 - 685mm
- Seat height: 535 - 680mm
- Max weight: 160kg
- BS EN ISO 10993-10

90270



Perching Stool with PU Seat and Steel Arms

- Adjustable Height
- Length: 415 - 460mm
- Width: 560 - 620mm
- Height: 723-868mm
- Seat height: 535 - 680mm
- Max weight: 160kg
- BS EN ISO 10993-10

90271



Perching Stool with PU Seat, Steel Arms and Back

- Adjustable Height
- Length: 415 - 460mm
- Width: 560 - 620mm
- Height: 815 - 960mm
- Seat height: 535 - 680mm
- Seat width: 325mm
- Seat depth: 265mm
- Max weight: 160kg
- BS EN ISO 10993-10

90272



Perching Stool with PU Seat, Steel Arms, Back

- 35mm Extended Seat
- Adjustable Height
- Length: 415 - 460mm
- Width: 560 - 620mm
- Height: 815 - 960mm
- Seat height: 535 - 680mm
- Seat width: 368mm
- Seat depth: 275mm
- Max weight: 160kg
- BS EN ISO 10993-10

90673



Perching Stool with PU Seat, Steel Arms and Padded Back

- Adjustable Height
- Length: 415 - 460mm
- Width: 560 - 620mm
- Height: 855 - 1000mm
- Seat height: 535 - 680mm
- Seat width: 325mm
- Seat depth: 265mm
- Max weight: 160kg
- BS EN ISO 10993-10

90273



Perching Stool with PU Seat, Steel Arms and Padded Back

- 35mm Extended Seat
- Adjustable Height
- Length: 415 - 460mm
- Width: 560 - 620mm
- Height: 855 - 1000mm
- Seat height: 535 - 680mm
- Seat width: 368mm
- Seat depth: 275mm
- Max weight: 160kg
- BS EN ISO 10993-10

90674



Bariatric Perching Stool with PU Seat, PU Back & Arms

- Adjustable Height
- Length: 465-515mm
- Width: 650-710mm
- Height: 790 - 935mm
- Seat height: 485-630mm
- Max weight: 290kg
- BS EN ISO 10993-10

90346



KD Perching Stool

- Removable Arms, Legs and Back
- Steel Arms
- Height Adjustable
- Max weight: 160kg
- BS EN ISO 10993-10

90626



Two Tier Trolley with Brakes

- Push to lock brakes
- Length: 530mm
- Width: 595mm
- Height: 770 - 910mm
- Castor size: 150mm
- Max weight: 125kg
- BS EN ISO 10993-10

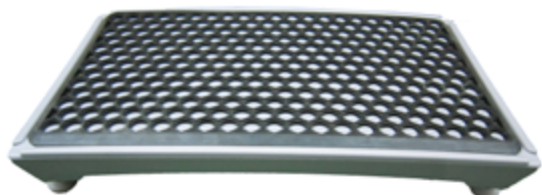
90668



2 Tier KD Dinner Trolley

- Height Adjustable
- 2 x Removable Shelves
- Length: 501mm
- Width: 445mm
- Height: 845 - 945mm
- BS EN ISO 10993-10

90072



Half Step

- Adjustable Feet
- Removable slip resistant mat
- Plastic - will not rust
- Length: 430mm, Width: 735mm, Height: 112mm
- Max weight: 190kg

90141



Back Rest

- Folds flat for easy storage
- Sturdy frame with breathable mesh fabric
- Adjustable soft pillow
- 5 levels of angle adjustment
- Width: 580mm, Depth: 515mm, Height: 560mm
- Max weight: 127kg

90668



Urathon[®]

UK WAREHOUSING

Our dedicated UK warehouse allows for quick dispatch to you. No overseas shipping delays. Receive your products quickly, on time and when you need them. That's our promise to you.

SUPPLY FROM STOCK

We fulfil product orders quickly from stock within our self managed UK warehouse. This allows us to always provide fast and reliable turnaround times with next day delivery available.

OUTSTANDING CUSTOMER CARE

Customer care is at the heart of our business. Your satisfaction is paramount and we always aim to go above and beyond.

Call **01249 760581**

Email **sales@urathon.com**

Visit **www.urathon.com**

Urathon[®]

**SPECIALIST SUPPLIERS TO THE MOBILITY
& REHABILITATION INDUSTRY**